

# BL01 Bollard

Power Selectable | 3CCT | 120-347V

Suitable for pathways, gardens, sidewalks, building entrances, and other landscapes that require low to the ground illumination

## LIGHT ENGINE



\*PICTURED WITH BASE POLE (SOLD SEPARATELY) BL01-14W-4P-3CCT-UD

Power Selectable 14W Maximum

25% / 50% / 75% / 100% field adjustable

Colour Selectable 3000K / 4000K / 5000K

Type V Light Distribution

Polyester Powder Coat Finish Black

Vandal Resistant IK10

## BASE POLES



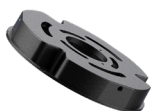
BL01-BASE19 BL01-BASE35 BL01-BASE42

Choose from 19", 35", and 42" Base Poles

**NOTE:** 19", 35", or 42" Base Poles are sold separately from light engine, and are **required** for installation.

19", 35", and 42" represent **total** height of the luminaire **including Base Pole and Light Engine**

## MOUNTING



Mounting Plate INCLUDED WITH BASE POLE



Anchor Bolts & Plate SOLD SEPARATELY (BL01-PLATE)

**WET CONCRETE INSTALLATION:**  
Anchor Bolts & Plate (BL01-PLATE) are **required** for wet concrete installation.

## SPILL CONTROL



Visor SOLD SEPARATELY (BL01-VISOR)



## TECHNICAL DATA



### LIGHT SPECIFICATIONS

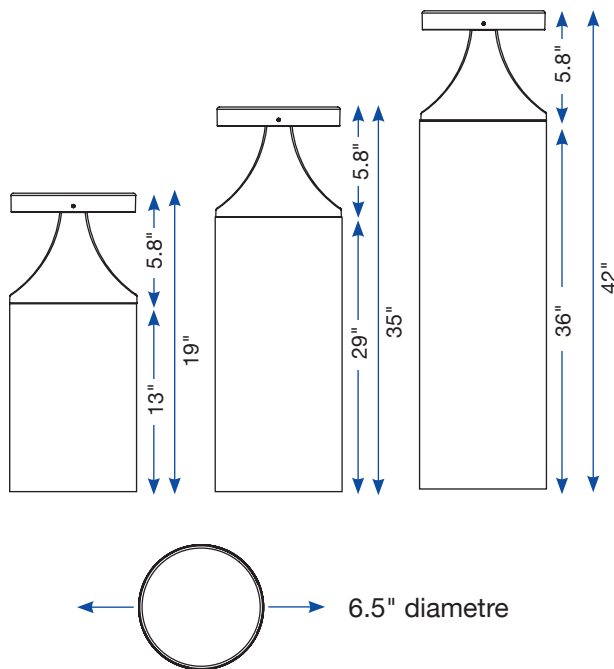
Lumens	1,680 lm
Efficacy	120 lm/W
CCT	3000K/4000K/5000K
CRI	80
Dimmable	0-10V
Beam Angle	Type V
L70 Life	60,000 hrs
Warranty	10-year
Factory Settings	14W   5000K

### APPROVALS AND LISTINGS

cETL	5009705
------	---------

### DIMENSIONS

**NOTE:** 19", 35", and 42" represent **total** height of the luminaire **including Base Pole and Light Engine**



### ELECTRICAL

Wattage	14W maximum (field adjustable to 25%, 50%, 75% or 100%)
Voltage	120-347V
Current	0.3A
Surge Protection	2kV
Auxiliary Output	N/A
Power Factor	0.9
THD	20%
Operating Temp	-40 to 50°C

### CONSTRUCTION

Housing	Aluminum Alloy
Lens	Polycarbonate
Finish	Powder Coat
Finish Colour	Black
IP Rating	IP66

### DIMENSIONS & WEIGHTS

Fixture Weight	5.4 lbs
Fixture Dimensions	Polycarbonate
Carton Qty	1
Carton Weight	6.5 lbs
Carton Dimensions	13.8 x 8.7 x 8.7 in

### ACCESSORIES (SOLD SEPARATELY)

BL01-BASE19	19" Pole & Base Plate
BL01-BASE35	35" Pole & Base Plate
BL01-BASE42	42" Pole & Base Plate
BL01-PLATE	Anchor Bolts & Plate
BL01-VISOR	Visor

**NOTE:** 19", 35", or 42" Pole & Base (sold separately) is **required for installation**.

**WET CONCRETE INSTALLATION:** Anchor Bolts & Plate (BL01-PLATE) are **required** for wet concrete installation.